

ellipse premium 800

Solution-Pac

Solution-Pac

The indispensable companion software for your MGE UPS

software
for MGE UPSs

Advanced Features

- ▶ Intuitive graphical interface
- ▶ Color coded status display
- ▶ Automatic shutdown of unattended servers upon power failure
- ▶ Automatic reboot upon power restoration
- ▶ Remote monitoring
- ▶ System operation scheduling
- ▶ Numerous presets simplify setup
- ▶ Multiple server shutdown in a heterogeneous environment
- ▶ Distributed, TCP/IP based, architecture
- ▶ Trap recognition acknowledgement for reduced network traffic
- ▶ Integration with enterprise-wide management systems
- ▶ Remote monitoring from any console on the WAN
- ▶ Individual receptacle control
- ▶ Environment management built-in

Pulsar ellipse and
ellipse premium

Pulsar Extreme

Pulsar Extreme C

Pulsar Evolution

Pulsar ES+

Pulsar ESv, ESv+

Pulsar EX

Pulsar EXL

Comet

Comet Extreme

Galaxy 3000

Galaxy PW

EPS 3000

EPS 6000

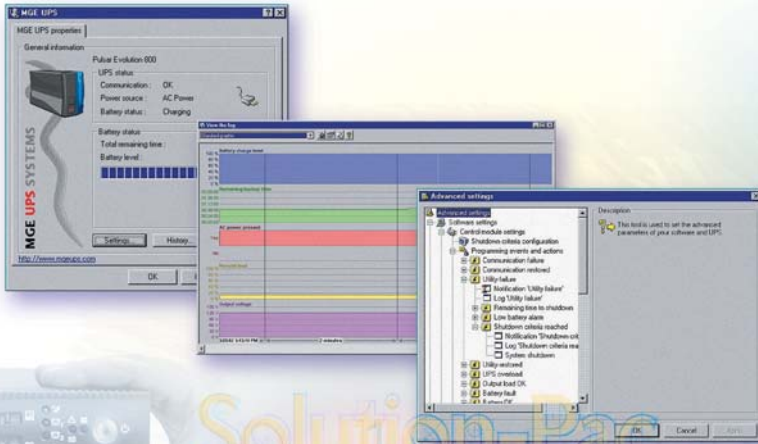
Solution-Pac is MGE UPS SYSTEMS' powerful suite of UPS shutdown and monitoring software designed specifically to meet the needs of power management for customers ranging from SOHO to extensive enterprise-wide corporations.

Solution-Pac is available for operating systems ranging from the various versions of *Windows*, to *Linux*, *Apple Mac*, *Unix*, *Novell's NetWare*, etc., in two versions: **Personal Solution-Pac**, and **Solution-Pac/WAN**.

THE UNINTERRUPTIBLE POWER PROVIDER

M G E
UPS SYSTEMS

Personal Solution-Pac



Solution-Pac
Personal

software
for MGE UPSs

Powerful features ~ MGE's Personal Solution-Pac is the power management software of choice for SOHO and small business users looking for an easy to use, yet fully-featured solution to enhance the power protection provided by their MGE UPS.

Personal Solution-Pac gives the user a real time view of on-site power parameters. Personal Solution-Pac also provides the ability to set-up automatic actions in case of a power crisis, like the automatic shutdown of the PC or server at the end of the battery runtime or sending an alert to notify of a power problem.

Easy Integration ~ Personal Solution-Pac, using Power Panels, is the power management software designed for seamless integration with the various Microsoft Windows Operating Systems. Personal Solution-Pac is designed to speed up the installation process and reduce any difficulties related with proprietary drivers by providing a simple, yet complete solution with the same look and feel as the OS.

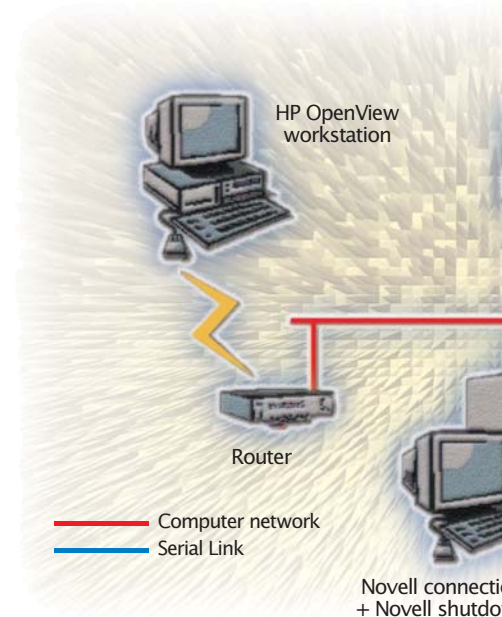
With Windows 2000, for example, there is no need to install the driver. Any USB-enabled MGE UPS will be automatically detected and supported in the power management control panel. For additional monitoring capabilities beyond the standard Microsoft Windows Power Panels, simply download the free Personal Solution-Pac from the MGE website.

Standards based ~ Personal Solution-Pac uses a new protocol based on Microsoft's Human Interface Device (HID) specification, to allow faster, more reliable communication compared with historical communication protocols. As the initial author and editor of the power industry's standards effort, MGE UPS SYSTEMS continues to offer leadership and innovation to assure the optimal integration of the UPS into customer's enterprise networks.

PowerShare Technology ~ Personal Solution-Pac incorporates MGE's trademark feature for remote control of UPS output receptacles, PowerShare. MGE introduced this

feature to the UPS market back in 1993 for on-line UPS models between 2 and 4 kVA. This feature is now standard on numerous MGE products.

Personal Solution-Pac is the right choice for individual or small business users looking for a useful enhancement to their power protection at no additional cost.





Solution-Pac/WAN

Features	Windows	Novell	SCO
Installation			
Installation wizard	Yes	Yes	
Easy setup	Yes	Yes	Yes
Orderly shutdown (advanced features)			
Multiple server shutdown (same OS)	Yes	Yes	Yes
Fully configurable action files, related to UPS events	Yes	Yes	Yes
Multiple server shutdown (different OS)	Yes	Yes	Yes
Graphical Interface			
Intuitive operating status display	Yes	Yes	Yes
Detailed parameter analysis	Yes	Yes	Yes
Second generation GUI (Graphical User Interface)	Yes		
Standard/Advanced modes	Yes	Yes	
On/Off scheduling	Yes	Yes	Yes
Alert notification to the administrator	Yes		
Environmental monitoring	Yes	Yes	Yes
Software vendor endorsements	Yes	Yes	Yes
Remote receptacle control	Yes	Yes	Yes

Network Integration ~ Solution-Pac is also available in a version specifically designed for enterprise-wide network integration. Solution-Pac/WAN has been specifically designed to monitor several UPSs on wide area networks. Its operation uses the TCP/IP and SNMP network layers and can be fully integrated into a wider network management system such as HP Openview and Square-D PowerLogic.

Multiple servers may be shut down simultaneously, even with different operating systems.

elements give instant information on their status to enable fast reaction should a power problem occur.

Solution-Pac/WAN concentrates all the above functions for the most popular network environments: Windows 95/98, Windows Me, 2000, NT, NetWare, Linux, IBM AIX, SCO Unix Open Server, HP-UX and more. . .

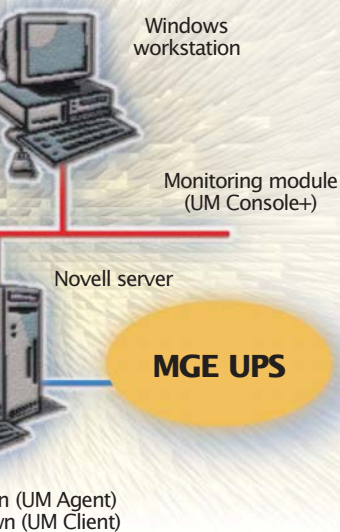
Today, UPS protection is not complete and efficient unless it is associated with powerful software functions for warning users and system managers of any power related problem, automating system shutdown procedures and monitoring and controlling UPSs remotely.

Solution-Pac/WAN integrates software functions that let you:

- ▶ Connect the UPS to a server
- ▶ Remotely monitor and administer its performance
- ▶ Automatically shut down one or more servers in a multi platform environment
- ▶ Send alerts to a SNMP supervision platform.

This is why MGE UPS SYSTEMS has developed Solution-Pac/WAN, revolutionizing enterprise network protection concepts. Because these functions have become indispensable, Solution-Pac/WAN is supplied as a standard feature with all our UPSs, at no additional cost.

Graphical Interface (Windows) ~ With a graphical interface, monitoring power has never been easier. Icons representing both the specific UPS and the protected device will be displayed in the graphical interface. Color codes on the critical power and data links or



Operating Systems

Operating System	OS Version	Personal Solution-Pac	Solution-Pac/WAN components		
			UM-Agent	UM-Client	UM-Console/UM-Console+
Windows 2000 (Intel) ⁽¹⁾		■	■	■	UM Console +
Windows Millennium		■	■	■	UM Console +
Windows 98		■	■	■	UM Console +
Windows 95		■	■	■	UM Console +
Windows NT (Intel)	3.51 - 4.x	■	■	■	UM Console +
Windows NT (Alpha)	4.0	■	■	■	UM Console +
Windows NT-Terminal Server Edition	4.0	■	Web	Web	Web
Linux (Intel) – RedHat	6.x - 7.0 (GLibc)	■		■	
Linux (Intel) – RPM for RedHat	6.x - 7.0 (GLibc)	*	■		
Linux (Intel) – Mandrake	7.1 (GLibc)	■		■	
Linux (Intel) – SuSE	6.4 - 7.0 (GLibc)	■		■	
Linux (Intel) – Corel	1.2	■			
Linux (Intel) – Slackware	7.0	■			
FreeBSD	3.4 & 4.0	*	■		
Novell NetWare	3.12 - 4.02 - 4.1 - 5.x	■	■	■	
SCO Unix Open Server	5.0.x	■	■	■	UM Console
SCO UnixWare	7.x	■			
SUN Solaris PC & WS	2.6 – 7 - 8	■		■	
HP UX	10.x - 11.x	■	■	■	UM Console
IBM AIX	4.1 - 4.2 - 4.3	■	■	■	
IBM OS/2 Warp Connect	3.0 - 4.0	*	■	■	■
IBM WIN OS/2 + Warp C.	3.0 - 4.0				UM Console +
IBM LanServer	3.0 - 4.0			■	
Compaq Tru64/Digital Unix (Alpha)	3.2 - 4.0.x			■	
Digital Open VMS/Alpha	7.1		*	■	
Interactive UNIX	4.1			■	
SILICON GRAPHICS IRIX	6.5.3 – 6.5.6 – 6.5.8		*	■	
UNISYS	1.4.1		*	■	

⁽¹⁾ Compatible : Windows 2000 Professional – Server – Advanced Server – Datacenter Server * You will find the shutdown software for these Operating Systems in the [Proto] directory on the Solution-Pac CD



MGE UPS SYSTEMS

USA (headquarters)
1660 Scenic Avenue
Costa Mesa, CA 92626
tel (800) 523-0142
(714) 557-1636
fax (714) 557-9788

CANADA
#9, 2798 Thamesgate Dr.
Mississauga, ON L4T 4E8
tel (905) 672-0990
(877) 672-0990
fax (905) 672-7667

ARGENTINA
Thames 91
1609 San Isidro
Prov de Buenos Aires
tel (54) 11-4766-8777
fax (54) 11-4766-6008

BRAZIL
Avenida Guido
Caloi 1985 (GALPAO 23)
Guarapiranga
Sao Paulo - SP CEP 05802
tel (55) 11-5891-2274
fax (55) 11-5890-3353

MEXICO
Ave. Congreso de la
Union
#524 Colonia Santa Anita
Mexico D.F 08300
tel 525 538 9687
fax 525 530 7625

www.mgeups.com
info@mgeups.com

SolPac 100
Effective: April 2002