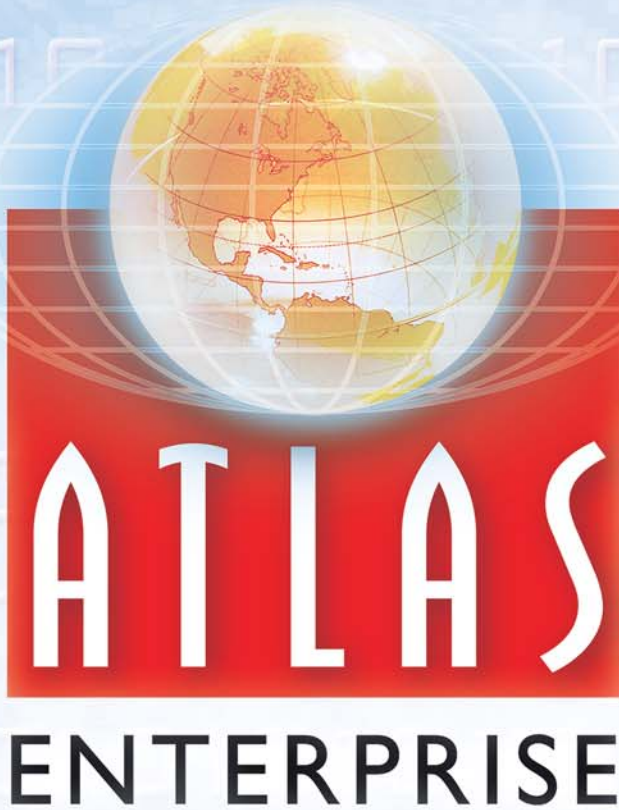


## Enterprise Network and Asset Management Solution



Atlas and Atlas Enterprise deliver the most comprehensive centralized network and asset management platform to monitor and control a heterogeneous computing ecosystem. The seamless interface enables enhanced monitoring of multiple branded UPSs and power devices from a single console.

### Features

- ▶ Real-time alarm monitoring
- ▶ Device autodiscovery
- ▶ Configurable functional hierarchy structure
- ▶ Extensive reporting and logging feature set
- ▶ Centralized configuration

### Supported devices

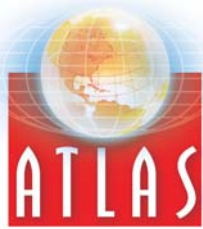
- ▶ Compatibility between all peer-to-peer and enterprise-level Atlas platforms
- ▶ Multiple branded
- ▶ Power Management software suites
- ▶ Power Strips
- ▶ SNMP/Web card
- ▶ Ethernet Switch
- ▶ Power Distribution Units (PDUs)
- ▶ Uninterruptible Power Supplies (UPSs)
- ▶ Rack Monitoring Devices

### *Centralized network information at your fingertips.*

Atlas web based UPS monitoring and control platform provides a comprehensive overview of your corporate network environment from a single interface. Providing more than just traditional UPS monitoring, Atlas enables the IT road-warrior to monitor and control PDUs, smart switches, rack monitoring equipment, environmental monitoring equipment and more. The high performance interface integrates multiple monitoring capabilities into a single source to provide you with the ease-of-use to manage the entire network through a simple centralized interface.

Ensuring high availability of the network computing infrastructure

**M G E**  
UPS SYSTEMS



## Atlas Architecture

The standard Atlas consists of two major components, the Management Server and the Remote Shutdown Agent.

The following diagram illustrates the overall architecture of the product:

### Management Server

- ▶ UPS communication
- ▶ UPS autodiscovery
- ▶ Event management (broadcasting, SNMP traps, email)
- ▶ Graceful, unattended shutdown of the management server
- ▶ Data and event logging
- ▶ Communication with Remote Shutdown Agents
- ▶ Providing web content

### Remote Shutdown Agent

Facilitates a graceful, unattended shutdown of the Remote Shutdown Agent



■ About Atlas, Atlas Enterprise

## Product Highlights

### Available Offerings

**Atlas** – Peer-to-Peer UPS monitoring and control platform to manage one or more power protection devices.

**Atlas Enterprise Edition** – Centralized enterprise-level monitoring and inventory management platform for multiple devices and brands.

### Network Protection

Atlas protects your system with comprehensive monitoring of your network architecture to enable preventive maintenance on your systems.

### Leading-Edge Technology

- ▶ User customized network shutdown processes
- ▶ Multiple alerting, broadcasting, command scripting, and control capabilities
- ▶ Scheduled maintenance and delay timer protocols per activity

### Brand Ubiquity

Atlas offers the ability to manage multiple UPSs from a variety of manufacturers. Atlas allows you to monitor all your power protection equipment with one software package, thereby reducing the confusion or time required to manage multiple software packages.

I N T E

Remote Browser



■ Overview



■ Overview, Animation



■ Edit Group Layout



Remote Shutdown



## ■ Atlas Enterprise Architecture

The Atlas Enterprise Edition consists of two major components, the Server and the Management Console.

### The Server

- ▶ Communication with Atlas client servers
- ▶ Atlas client autodiscovery
- ▶ Providing web content

### The Management Console

- ▶ Define a device hierarchy
- ▶ Monitor multiple devices from a single console
- ▶ Configure multiple devices
- ▶ Execute commands on multiple devices
- ▶ View detailed reports on critical device parameters

# R N E T



NMS

## ■ Features and Benefits

Atlas and Atlas Enterprise are packed with a robust set of peer-to-peer and network wide features to for small and large enterprise environments alike. The Atlas architecture securely manages the network while enabling predictive failure analysis to allow enterprise managers to perform proactive crisis management.

### System Shutdown Options

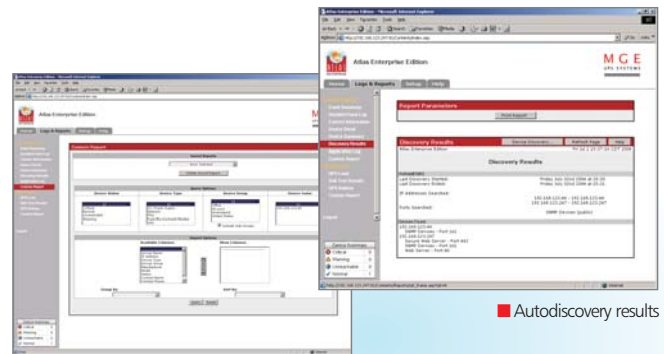
- ▶ Email, broadcast, and SNMP notification when an event occurs
- ▶ Remote shutdown of multiple computers
- ▶ Secure (SSL) web-based management
- ▶ Autodiscovery of the UPS model for easy configuration
- ▶ Communicates with USB, single serial (RS-232) and Network protocols
- ▶ Works across multiple UPS protocols

### Ease-of-Use

- ▶ Autodiscovery function searches for UPSs, web servers, SNMP, and Telnet devices
- ▶ Customizable settings per device or device group to help you delegate and identify mission-critical applications

### Multiple Reporting Options

- ▶ Enable monitoring of thousands of connected nodes
- ▶ Microsoft Access support for smaller enterprises
- ▶ Full SQL Server interface for larger enterprises
- ▶ Both provide fully-featured reporting capabilities to produce detailed reports on critical power management parameters such as battery age and load.



■ Autodiscovery results

■ Custom Report

### Preventive Maintenance

- ▶ Predictive failure analysis enables IT managers to perform proactive crisis management
- ▶ User-definable hierarchical structure with alarm propagation for easy troubleshooting
- ▶ Control of devices through P2P platform, XML, and SNMP protocols

### On Demand Accessibility

- ▶ Real-time view of all active system alarms
- ▶ Anytime, anywhere web-based views including PDA and web phone

### Flexible Protocols

Using XML communication technology enables Atlas to interface with devices other than UPSs and assists with autodiscovery. Utilizing the SNMP trap receiver, Atlas is able to process alarm conditions from any SNMP device.

### Operating Systems

The server component of Atlas runs on the Windows NT, Windows 2000, and Windows XP operating systems. Atlas' management console component can be accessed using Microsoft Internet Explorer (5.x and 6.x) and Netscape (6.x, 7.x, 8.x) web browsers.

